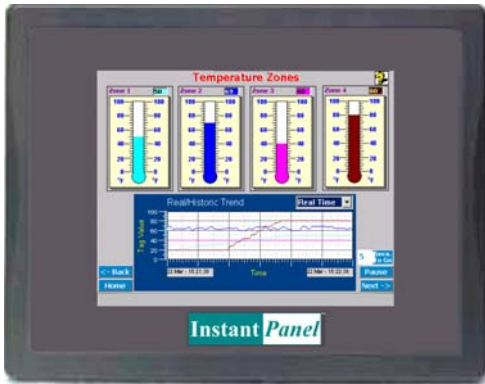


IP-CE57QVGA-Windows CE touch panel with 5.7" QVGA STN display



Features

- 5.7" QVGA STN LCD
- CIRRUS LOGIC® EP9315 200MHz ARM920T core processor
- Fan-less cooling system
- Built-in flash memory and Windows CE OS
- NEMA4/IP65 compliant front panel
- One CompactFlash™ slot

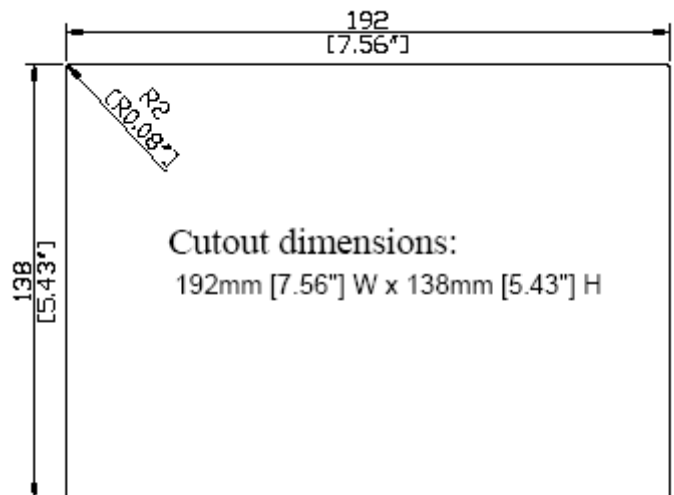
(Note: Sample HMI screen shown)

Introduction

The CE57QVGA is a miniature and compact platform that has no redundant functions. It is designed for small-sized operator interface market. Its RISC kernel, the CIRRUS LOGIC EP9135 200MHz processor design with a memory management unit (MMU), that supports Windows CE. The ARM920T's 32-bit microcontroller architecture, with a five-stage pipeline, delivers impressive performance at very low power.

The EP9315 includes a hardware graphics acceleration engine that improves graphic performance by handling block copy, block fill and hardware line draw operations. The graphics accelerator is used in the system to off load graphics operations from the processor.

Specifications	
Construction:	plastic molding housing
Display:	5.7" QVGA Color STN LCD
CPU and core logic:	CIRRUS LOGIC® EP9315 200MHz ARM920T core processor
DRAM:	64 MB on board
Storage:	32 MB flash memory on board, 1 CompactFlash™ card slot
I/O:	3 serial ports: Com1: RS-232/RS-485 2w/4w, Com2: RS-232, Com3: RS-232/RS-485 2w 1 Ethernet port (10/100Base-T) 2 USB 2.0 full-speed host (12Mbps)
Sound output:	AC '97 interface
RTC:	Built-in
Power input:	24 Voc _{DC} , 0.5A maximum
Dimension (W H x D):	204 x 150 x 48mm
Weight:	0.85kg



Environmental Specifications

- Operating temperature:** 0° ~ 45°C (32° ~ 113°F)
- Relative humidity:** 10% ~ 90% @ 40°C, non-condensing
- Shock (operation):** 10 to 25Hz(X,Y,Z direction 2G 30minutes)
- EMI:** Complies with FCC Class A
- CE :** Complies with EN50081-2 and EN50082-2 standards
- Front panel meets NEMA4 / IP65**

Touchscreen

- Type:** 4-wire, analog resistive
- Resolution:** continuous
- Light transmission:** above 80%
- Life:** 1 million activation minimum

LCD Display	
Display type	STN color LCD
Display size (diagonal)	5.7"
Resolution	320 x 240
Pixel pitch (HxV, mm)	0.36 x 0.36
Viewing angle (°)	100
Luminance (cd/m²)	150
Storage temperature (°C)	-20~60
Operating temperature (°C)	0~45
Backlight	1 CCFL
Contrast ratio	30:1

Note: Manufacturer's warranty applies on all hardware. Specifications subject to change without notice
Copyright © 2005-2006 Software Horizons Inc., 100 Treble Cove Road, N. Billerica, MA 01862, USA www.InstantHMI.com