

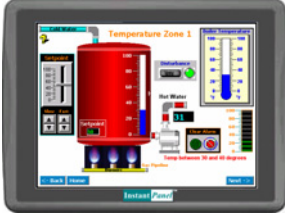



InstantPanel X-Series Specifications

| Model | IP-10X-CE/XP | IP-12X-CE/XP | IP-15X-CE/XP |
|---|---|--|---|
|  |  |  |  |
| Display | 10.4" TFT | 12.1" TFT | 15.0" TFT |
| Brightness | 400 cd/m ² | 450 cd/m ² | 350 cd/m ² |
| Max Colors | 65536 | | |
| Contrast Ratio | 300:1 | 600:1 | 700:1 |
| Resolution (WxH dots) | 640 x 480 | 800x600 | 1024x768 |
| Back Light | CCFL x 2 | | |
| CCFL Life Time | 40,000 hr. | 50,000 hr. | 50,000 hr. |
| Touch Panel | 4 wire, Analog resistive | | |
| Touch Accuracy | 2 mm | | |
| Surface Hardness | 4H | | |
| Serial Interface | COM1(RS232/RS485 2w/4w), COM2(RS232), COM3(RS232/RS485 2w) | | |
| Processor | 32 bit CISC CPU 500 MHz | | |
| Ethernet Port | 10/100 Base-T | | |
| USB Host | USB 2.0 x 2 | USB 2.0 x 3 | USB 2.0 x 3, Mini USB Port x 1 |
| Audio | Line Out x 1, Mic x 1 | | |
| Flash Memory | CE - 256MB or XP - 2 / 4 GB | | |
| DRAM | 256MB DDR400MHz | | |
| Memory card slot | SD Card Slot | 44 Pins IDE Interface | 44 Pins IDE Interface |
| I/O Port | PS/2 Port Connector | | |
| IDE Interface | 44 Pins IDE Interface | | |
| RTC | Built-in Real Time Clock | | |
| Input Voltage | 24VDC ± 5% | | |
| Power Consumption | 1.25A @24VDC | 0.8A @24VDC | 1.0A @24VDC |
| CE | Complies with EN50081-2 and EN50082-2 Standard | | |
| FCC | Complies with FCC Class A | | |
| Vibration endurance | 10 to 25 Hz (X,Y,Z direction 2G 30minutes) | | |
| Protection Structure | IP65 Front Panel (O ring seal) | | |
| Operating Temperature | 0 °C ~ 45°C (32 °F ~ 113°F) | | |
| Storage Temperature | -20 °C ~ 60°C (-4 °F ~ 140°F) | | |
| Enclosure | Plastic | Plastic | aluminum |
| Voltage Resistance | 500 VAC (1 min) | | |
| Isolation Resistance | Exceed 50MΩ at 500 VDC | | |
| Operating Humidity | 10-90% RH (non-condense) | | |
| VESA screw holes | VESA 75x75mm | | |
| Dimensions WxHxD | 286x212x50mm | 322x243x51mm | 366x293x55mm |
| Panel Cutout Dimensions | 259x201mm (10.20"x7.91") | 305x231mm | 352x279mm |
| Weight | Approx 1.6kg (3.52lb) | Approx 2.1kg | Approx 2.9kg |
| Operating System | Window CE or XP Embedded | | |

IP-10X-CE/XP X86 CPU Touch Panel Computer with 10.4" VGA TFT Display



Features

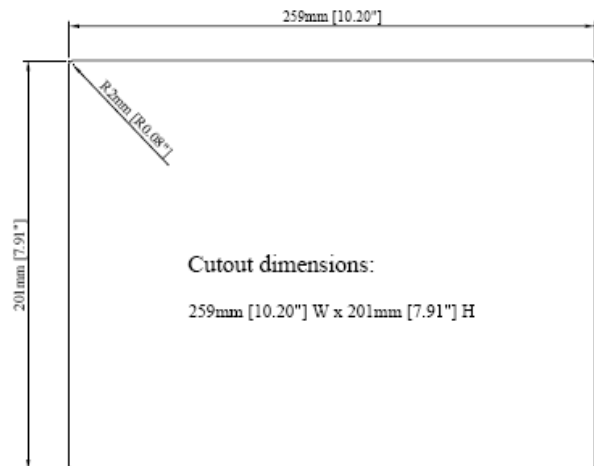
- 10.4" VGA TFT LCS
- AMD Geode™ LX800/500MHz core processor speed
- Fan-less cooling system
- Disk on module and Windows CE or XPE OS inside
- NEMA4/IP65 compliant front panel
- On-board 256MB DDR-400MHz SDRAM
- 44-pin IDE Interface
- High performance 2D accelerator graphic controller, supporting 8-64MB shared display memory

(Note: Sample HMI screen shown)

Introduction

The IP-10X-CE/XP is a miniature and compact platform that has excellent system performance and function. The x86 CPU Core provides the maximum compatibility with the vast amount of Internet content available while the intelligent integration of several other functions, including graphics, makes the AMD Geode™ LX processor a true system level multimedia solution.

| Specifications | |
|----------------------------|---|
| Construction: | plastic molding housing |
| Display: | 10.4" 640x480 65536 color TFT LCD |
| CPU and core logic: | AMD Geode™ LX800/500MHz core processor |
| DRAM: | 256MB on board DDR-400MHz SDRAM |
| Storage: | 44-pin IDE interface. DOM |
| I/O: | 3 serial ports: Com1: RS-232/RS-485 2w/4w, Com2: RS-232, Com3: RS-232/RS-485 2w 1 Ethernet port (10/100Base-T) 2 USB 2.0 full-speed host (12Mbps) SD CARD Slot PS/2 Port Connector |
| Sound output: | 20-bits Stereo output |
| RTC: | Built-in |
| Power input: | 24 V _{dc} , 440mA maximum |
| Dimension (WxHxD): | 286x212x50mm |
| Weight | Approx. 1.6kg (3.52 lb) |



Environmental Specifications

- Operating temperature:** 0° ~ 45°C (32° ~ 113°F)
- Relative humidity:** 10% ~ 90% @ 40°C, non-condensing
- Shock (operation):** 10 to 25Hz(X,Y,Z direction 2G 30minutes)
- EMI:** Complies with FCC Class A
- CE:** Complies with EN50081-2 and EN50082-2 standards
- Front panel meets NEMA4 / IP65**

Touchscreen

- Type:** 4-wire, analog resistive
- Resolution:** continuous
- Touch Accuracy:** ±3.5%
- Light transmission:** above 80%
- Life:** 1 million activation minimum

| LCD Display | |
|-------------------------------------|-------------|
| Display type | TFT LCD |
| Display size (diagonal) | 10.4" |
| Max colors | 65536 |
| Resolution | 640 x 480 |
| Pixel pitch (HxV, mm) | 0.33 x 0.33 |
| Luminance (cd/m²) | 400 |
| Storage temperature (°C) | -20~60 |
| Operating temperature (°C) | 0~45 |
| Backlight | CCFL x 2 |
| Backlight life time | 40,000 hrs. |
| Contrast ratio | 300:1 |

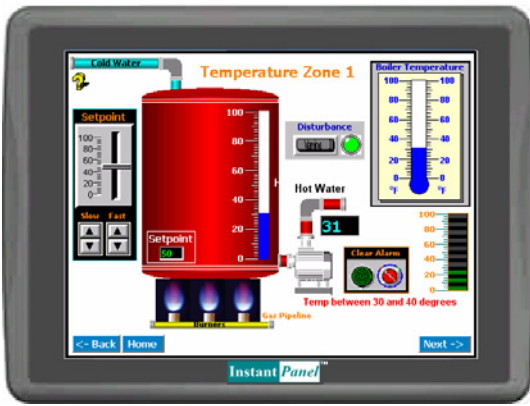
Ordering Info

45-IP10X-CE or 45-IP10X-XP2

Note: Manufacturer's warranty applies on all hardware. Specifications subject to change without notice.
Copyright © 2005-2009 Software Horizons Inc., 100 Treble Cove Road, N. Billerica, MA 01862, USA www.InstantHMI.com



IP-12X-CE/XP X86 CPU Touch Panel Computer with 12.1" SVGA TFT Display



Features

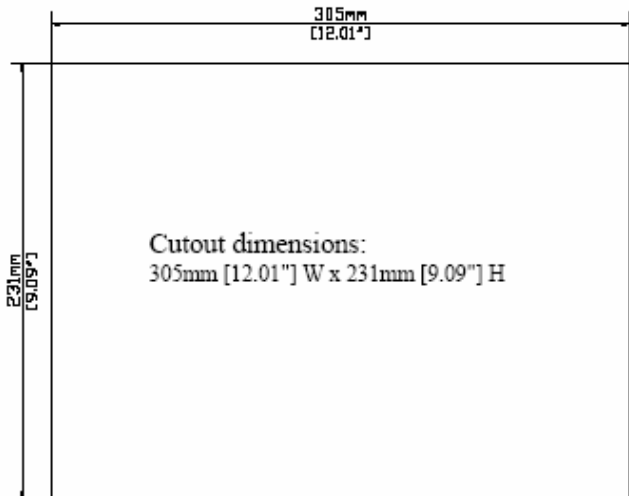
- 12.1" SVGA 18-bit TFT LCD
- AMD Geode™ LX800/500MHz core processor speed
- Fan-less cooling system
- NEMA4/IP65 compliant front panel
- On-board 256MB DDR-400MHz SDRAM
- 44-pin IDE interface (D.O.M)
- High performance 2D accelerator graphic controller, supporting 8~128MB shared display memory

(Note: Sample HMI screen shown)

Introduction

The IP-12X-CE/XP is a miniature and compact platform that has excellent system performance and function. The x86 CPU Core provides the maximum compatibility with the vast amount of Internet content available while the intelligent integration of several other functions, including graphics, makes the AMD Geode™ LX processor a true system level multimedia solution.

| Specifications | |
|-----------------------------|--|
| Construction: | plastic molding housing |
| Display: | 12.1" SVGA Color TFT LCD |
| CPU and core logic: | AMD Geode™ LX800/500MHz core processor |
| System BIOS: | award PnP BIOS |
| DRAM: | 256MB on board DDR-400MHz SDRAM |
| Storage: | 44-pin IDE interface. |
| I/O: | 3 serial ports: Com1: RS-232/RS-485 2w/4w, Com2: RS-232, Com3: RS-232/RS-485 2w |
| Sound output: | 1 Ethernet port (10/100Base-T) |
| RTC: | 3 USB 2.0 full-speed host ports (12Mbps) |
| Power input: | 1 Mini USB full-speed port (12Mbps) |
| Dimension (W H x D): | AC'97 Stereo codec |
| Weight: | Built-in |
| | 24 VDC, 0.8A maximum |
| | 322 x 243 x 51mm |
| | about 2.1kg (6.38 lb) |



Environmental Specifications

- Operating temperature:** 0° ~ 45°C (32° ~ 113°F)
- Relative humidity:** 10% ~ 90% @ 40°C, non-condensing
- Shock (operation):** 10 to 25Hz(X,Y,Z direction 2G 30minutes)
- EMI:** Complies with FCC Class A
- CE:** Complies with EN50081-2 and EN50082-2 standards
- Front panel meets NEMA4 / IP65**

Touchscreen

- Type:** 4-wire, analog resistive
- Resolution:** continuous
- Light transmission:** above 80%
- Life:** 1 million activation minimum

| LCD Display | |
|-------------------------------------|-----------------------|
| Display type | TFT color LCD |
| Display size (diagonal) | 12.1" |
| Max colors | 65536 |
| Resolution | 800 x 600 |
| Pixel pitch (HxV, mm) | 0.3075 x 0.3075 |
| Viewing angle (°) | 50/60/70/70 (T/B/R/L) |
| Luminance (cd/m²) | 450 |
| Backlight | 2 x CCFLs |
| Contrast ratio | 600:1 |

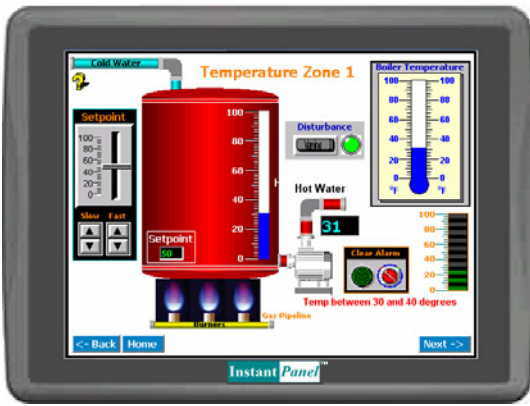
Ordering Info

45-IP12X-CE or 45-IP12X-XP2

Note: Manufacturer's warranty applies on all hardware. Specifications subject to change without notice.
Copyright © 2005-2009 Software Horizons Inc., 100 Treble Cove Road, N. Billerica, MA 01862, USA www.InstantHMI.com



IP-15X-CE/XP X86 CPU Touch Panel Computer with 15" XGA TFT Display



Features

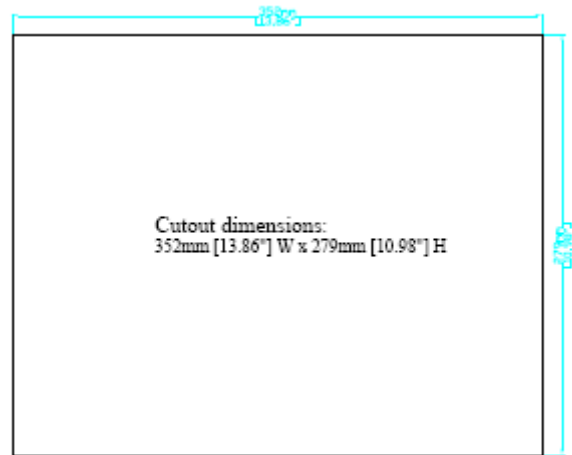
- 15.0" XGA TFT LCD
- AMD Geode™ LX800/500MHz core processor speed
- Fan-less cooling system
- NEMA4/IP65 compliant front panel
- On-board 256MB DDR-400MHz SDRAM
- 44-pin IDE interface
- High performance 2D accelerator graphic controller, supporting 8~128MB shared display memory
- D-sub VGA out

(Note: Sample HMI screen shown)

Introduction

The IP-15X-CE/XP is a miniature and compact platform that has excellent system performance and function, The x86 CPU Core provides maximum compatibility with the vast amount of Internet content available while the intelligent integration of several other functions, including graphics, makes the AMD Geode™ LX processor a true system level multimedia solutions.

| Specifications | |
|-----------------------------|--|
| Construction: | Aluminum housing |
| Display: | 15" XGA Color TFT LCD |
| CPU and core logic: | AMD Geode™ LX800/500MHz core processor |
| System BIOS: | award PnP BIOS |
| DRAM: | 256MB on board DDR-400MHz SDRAM |
| Storage: | 44-pin IDE interface. |
| I/O: | 3 serial ports: Com1: RS-232/RS-485 2w/4w, Com2: RS-232, Com3: RS-232/RS-485 2w |
| Sound output: | 1 Ethernet port (10/100Base-T) |
| RTC: | 3 USB 2.0 full-speed host ports (12Mbps) |
| Power input: | 1 Mini USB full-speed port (12Mbps) |
| Dimension (W H x D): | AC'97 Stereo codec |
| Weight: | Built-in |
| | 24 VDC, 0.8A maximum |
| | 366 x 293 x 55mm |
| | about 2.9kg (6.38 lb) |



Environmental Specifications

- Operating temperature:** 0° ~ 45°C (32° ~ 113°F)
- Relative humidity:** 10% ~ 90% @ 40°C, non-condensing
- Shock (operation):** 10 to 25Hz(X,Y,Z direction 2G 30minutes)
- EMI:** Complies with FCC Class A
- CE:** Complies with EN50081-2 and EN50082-2 standards
- Front panel meets NEMA4 / IP65**

Touchscreen

- Type:** 4-wire, analog resistive
- Resolution:** continuous
- Light transmission:** above 80%
- Life:** 1 million activation minimum

LCD Display

| | |
|--------------------------------|-----------------------|
| Display type | TFT color LCD |
| Display size (diagonal) | 15" |
| Max colors | 65536 |
| Resolution | 1024 x 768 |
| Pixel pitch (HxV, mm) | 0.297 x 0.297 |
| Viewing angle (°) | 65/60/70/70 (T/B/R/L) |
| Luminance (cd/m²) | 350 |
| Backlight | 2 CCFLs |
| Contrast ratio | 700:1 |

Ordering Info

45-IP15X-CE or 45-IP15X-XP2

Note: Manufacturer's warranty applies on all hardware. Specifications subject to change without notice.
Copyright © 2005-2009 Software Horizons Inc., 100 Treble Cove Road, N. Billerica, MA 01862, USA www.InstantHMI.com

