

Virtual PLC Boosts Any HMI

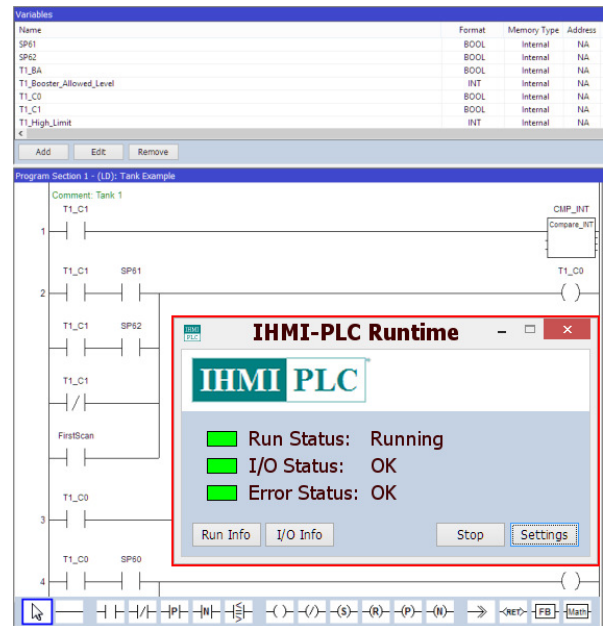
For Immediate Release:

North Billerica, MA - March 24, 2017: IHMI-PLC incorporates a virtual- PLC technology that can easily extend the functionality of your HMI software. This includes a stand-alone Development System for Windows PC and the virtual PLC-Runtime for Windows PC and CE platforms. Create PLC control programs using any mix of three IEC61131-3 programming languages: ST: Structured Text, IL: Instruction List, and LD: Ladder Diagram. When compiled, the same PLC control Program can run on Windows PC or CE platform.

The PLC program (Logic and Variables) is created in the Designer and executed by the PLC Runtime. While the virtual- PLC on the target platform (Windows PC or CE) performs the control logic programmed by the user, it provides direct I/O control access to the HMI Screens.

IHMI-PLC has a built-in front end status display showing run status, I/O status and error status. In addition, using Modbus TCP protocol as an interface, ANY HMI can access all PLC variables of interest and thus monitor and control the values in Registers, Coils, Digital I/O and Analog I/O.

IHMI-PLC also supports direct access API for plug-in I/O modules on CE touch panels available from some vendors. Using these panels Machine Builders can build a low-cost self contained Machine Controller without the need for expensive PLC hardware. External (non-plug-in) I/O modules available from many vendors can be accessed over Ethernet or serial connection using appropriate communication protocols.



The PLC Designer allows you to implement PLC logic using variables for Registers, Coils, Digital I/O and Analog I/O which are directly transferable to the appropriately defined HMI Tags, with PLC scan times as fast as sub-millisecond (depending on Processor power and amount of logic statements). The PLC Scan Time (in microseconds) is available at the end of each scan in reserved internal memory address for easy display on your HMI screen. This enables you to verify your PLC logic performance and I/O access. Scores of built-in library Functions and Function Blocks are included for rapid development of your PLC logic. Function Blocks in the Library include Timers, Counters, Edge Detection and Flip-Flops (Bistable). Functions in the Library include Math (SIN, SQRT, etc.), Selection (MIN, MAX, etc.), Bit (AND Mask, OR Mask, etc.), Bit strings (SHL, SHR, etc.), and numerous Data Type conversions.

For more information on IHMI-PLC visit www.instanthmi.com

About Software Horizons Inc.

Software Horizons Inc., founded in Massachusetts in 1983, focuses on developing Multi-Platform HMI / SCADA products which run on Desktop PCs, Touch Panels, or handheld PDAs and Smartphones.

For more information contact:

Ramal Murali

Software Horizons Inc.

100 Treble Cove Road, North Billerica, MA 01862-2231, USA

Phone: (978) 670-8700 or (800) 664-2000, Web Site: www.InstantHMI.com Email: ramal@shorizons.com

InstantHMI is a registered trademark and IHMI-PLC is a trademark of Software Horizons Inc.