

Tiny system helps Engineers and Technical Managers with Diagnostics, Trouble Shooting, Configuration and Data Logging.

InstantHMI[®] for Wago[®] converts Palm and Pocket PC handhelds into a powerful yet simple Human Machine Interface for Wago controllers.



Wireless RF and Infrared - Turn On the PDA and voila!, you have a low cost Human Machine Interface. Serial (RS-232) links to Wago controllers are also supported. You may monitor controller configurations, modify and/or capture process variables, controller parameters, recipes etc. in the handheld for transfer to Microsoft Excel on Windows PC.

Menu Screen interface consists of a simple menu of buttons that gives the operator the ability to access any of the available InstantHMI functions with ease.

Help provides help for all on-screen InstantHMI functionality, detailing each action item.

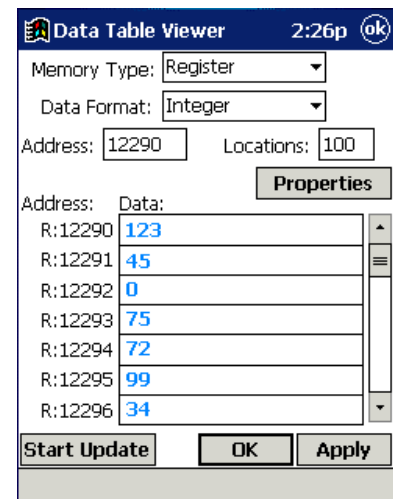
Login Password Security feature allows only authorized access to InstantHMI functions.

Comm Setup allows selection of TCP/IP RF , Infrared Raw, IRTComm or Direct Serial links and setting of communications parameters such as Baud Rate, Parity, Data Bits, Stop Bits, Station Offset etc.

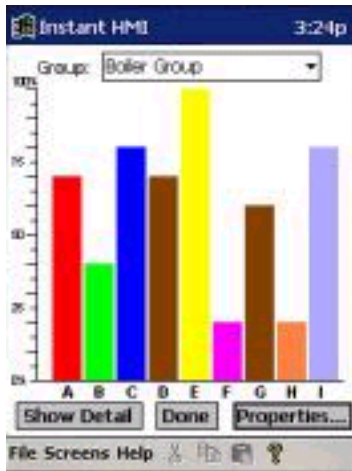
Process Image Viewer acquires the exact configuration for the Wago controller without the need to create/edit any Tags. The automatic Process Tags used to monitor I/O can be re-named to suit user needs.

Data Table Viewer allows consecutive controller data locations to be monitored. Simply select a starting address to monitor and change a configurable block of controller data (Registers, Inputs, Outputs etc).

Recipes button gives access to the InstantHMI recipe functions: Upload, Download, Save and Edit. You may save several recipes in the handheld under names of your choice and review any previously saved recipe. Restoring recipes back to the same or a different controller can be done in one simple step. These recipe parameters can be easily edited (if necessary) in the recipe edit screen in InstantHMI and restored to the same or different controller which makes controller configuration quick and easy.



Bar Graph screen displays a customizable bar graph of the selected controller data. Any items of interest may be included in the bar graph by tapping on the Properties button.



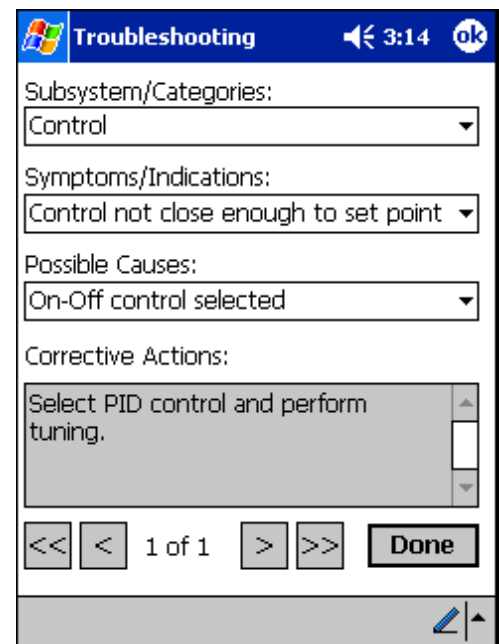
Data Logging allows you to select parameters from your Wago controllers to be continuously stored on the handheld at selected intervals. Logged data can be viewed on the handheld or transferred to a PC for later analysis using Microsoft Excel.

Message Editor allows you to assign meaningful names to data that is acquired from your controller. For example, if you have a pump that is controlled and monitored by your controller, you could assign a 0 value to be "Pump Off" and a 1 value to be "Pump On". You can use messages to define your own descriptive Process Status or Error Conditions.

The Instant HMI Tag Manager allows for quick and easy creation and editing of tags (controller data). Using the Tag Manager you can setup tags to monitor (or Data Log) relevant process information from your controller. The Tag Manager also allows for convenient and quick grouping of tags for easy access later. Placing tags into groups, allows for more logical and easier monitoring of commonly used process variables. Your controller may have hundreds of process variables, but you may only be interested in a dozen or so of those variables for frequent review. In such a case assign the variables of interest to a group and have easy access to that information anytime.

Troubleshoot Scripts can be user generated scripts to interactively select a series of Subsystems/Categories and Symptoms. This displays a small subset of Probable Causes so that you may select a cause and focus on the corresponding Corrective Actions displayed on the handheld. The **InstantHMI Desktop Companion** software provides a Troubleshooting Editor which can be used to set up the methodology and scripts to suit the individual end user application requirements.

Exit allows you to exit the InstantHMI application program. You may then access other applications on the handheld.



Authorized Reseller



100 Treble Cove Road
N. Billerica, MA 01862, USA
Tel: 978-670-8700
Fax: 978-670-8787

www.InstantHMI.com/wago



BUSINESS PARTNER

Software Horizons and InstantHMI are registered trademarks of Software Horizons Inc. Palm OS is a registered trademark and Palm is a trademark of Palm Inc. Wago is a registered trademark of Wago Corporation. All other trademarks belong to the respective companies.